

# Gorgeous Velvet

Velluto / Velvet Cat. c

## Composizione/ Composition

50% PES  
50% PES TRE

## Abrasione/Abrasion (Martindale)

100.000 cicli/cycles  
EN ISO 12947-2

## Pilling

5 EN ISO 12945-2

**Solidità colori alla luce**  
**Colour fastness to light**  
>=5 EN ISO 105 B02

## Solidità colori allo sfregamento

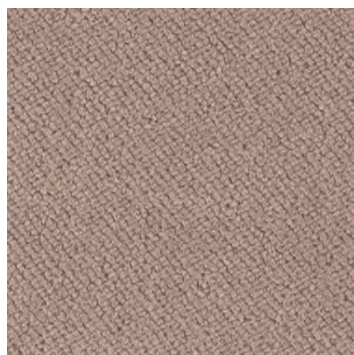
**Colour fastness to rubbing**  
secco \_ dry: 4  
umido \_ wet: 4  
EN ISO 105 X12

## Resistenza al fuoco/Flame Retardant

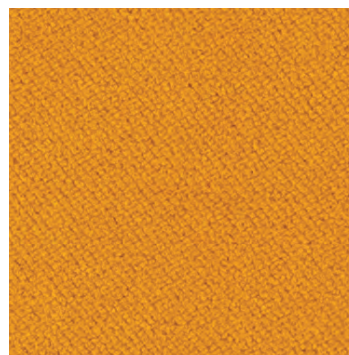
BS 5852 crib 5 ▪ DIN 4102, B1 ▪ EN 1021-1/2 ▪  
IMO FTP Code 2010 Part 8 ▪ NF P 92 503-507,  
M1 ▪ UNI 9175 classe 1IM



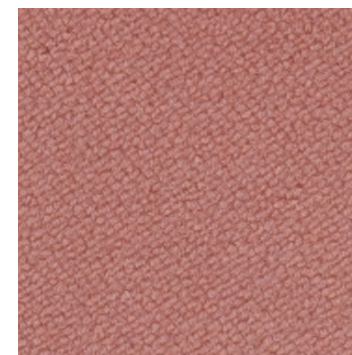
GRG 2103



GRG 2102



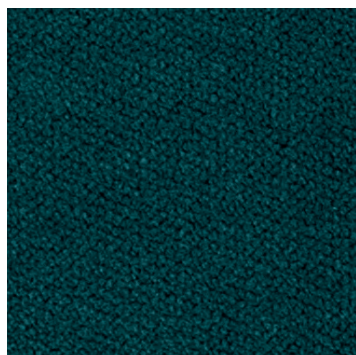
GRG 2108



GRG 2114



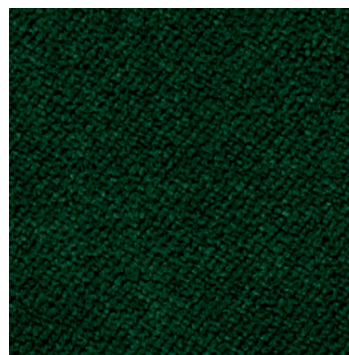
GRG 2118



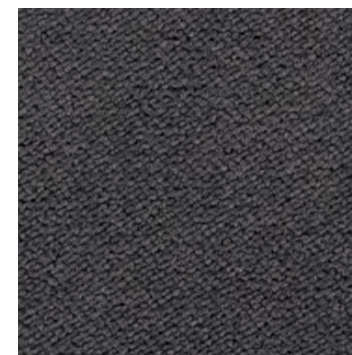
GRG 2134



GRG 2128



GRG 2135



GRG 2150



GRG 2147

Disponibile su richiesta in 60 colori  
Scheda tecnica completa > [clicca qui.](#)

Available on demand in 60 colours.  
Complete technical schedule > [click here.](#)

**cizeta**