

# Main Line Flax

Tessuto / Fabric Cat. c

## Composizione/ Composition

75% WV  
25% LI

## Abrasione/Abrasion (Martindale)

> 50.000 cicli/cycles

## Solidità colori alla luce Colour fastness to light

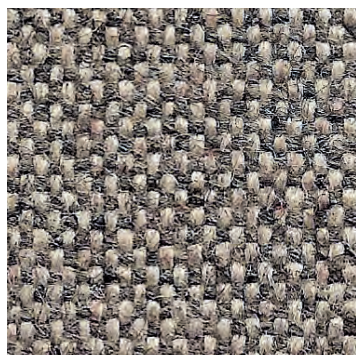
4/5 *EN ISO 105 B02*

## Solidità colori allo sfregamento Colour fastness to rubbing

secco \_ dry: 3  
umido \_ wet: 4  
*EN ISO 105 X12*

## Resistenza al fuoco/Flame Retardant

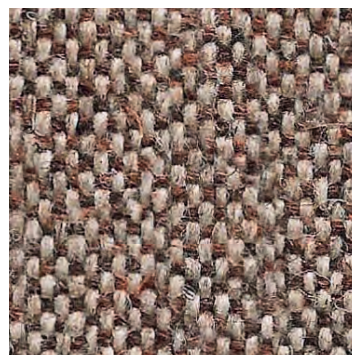
BS 5852 crib 5 ▪ BS 7176 Low & Medium Hazard  
▪ EN 1021-1/2 ▪ IMO FTP Code 2010 Part 8 ▪  
NF D 60-013 ▪ ÖNORM B 3825 & A 3800-1 ▪  
UNI 9175 Classe 1 IM



MLF 02



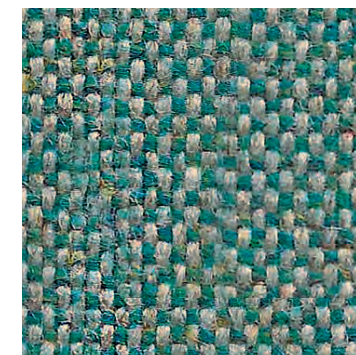
MLF 08



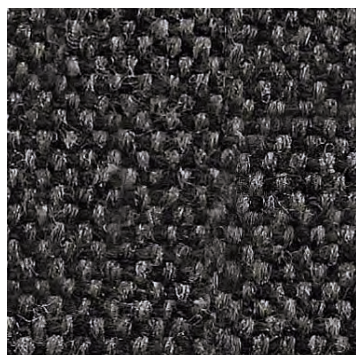
MLF 23



MLF 07



MLF 24



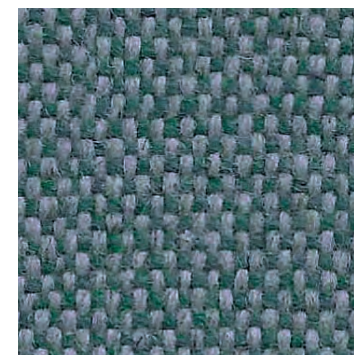
MLF 16



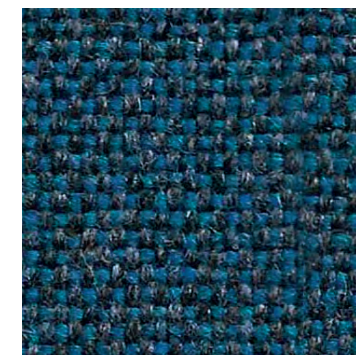
MLF 14



MLF 57



MLF 25



MLF 35

Disponibile su richiesta in 57 colori  
Scheda tecnica completa > [clicca qui](#).

Available on demand in 57 colours.  
Complete technical schedule > [click here](#).

**cizeta**