

# Steelcut Trio

Tessuto / Fabric Cat. E

## Composizione/ Composition

90% WW  
10% PA

## Abrasione/Abrasion (Martindale)

100.000 cicli/cycles  
EN ISO 12947-2

## Pilling

4 EN ISO 12945-2

## Solidità colori alla luce Colour fastness to light

6/7 EN ISO 105 B02

## Solidità colori allo sfregamento Colour fastness to rubbing

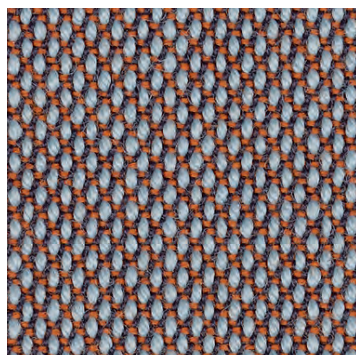
secco \_ dry: 4/5  
umido \_ wet: 4/5  
EN ISO 105 X12

## Resistenza al fuoco/Flame Retardant

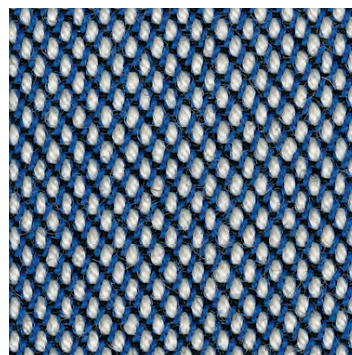
AS/NZS 1530.3 ▪ AS/NZS 3837 class 2 ▪  
BS 5852-1 ▪ EN 1021-1/2 ▪ IMO FTP Code  
2010 Part 8 ▪ NF D 60-013 ▪ NFPA 260, class 1  
▪ ÖNORM B1/Q1 ▪ UNI 9175 1IM ▪ US Cal. TB  
117-2013



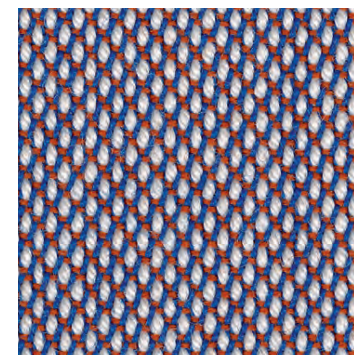
STT 105



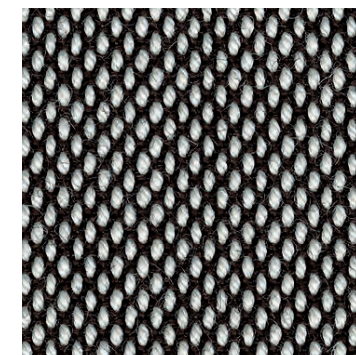
STT 416



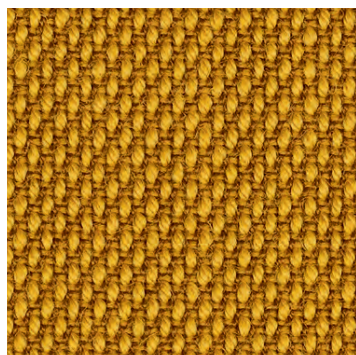
STT 716



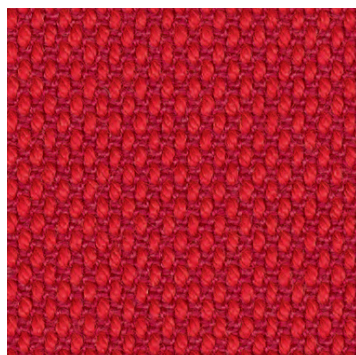
STT 806



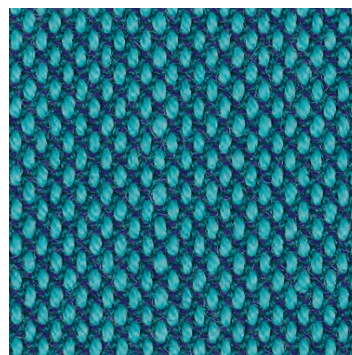
STT 124



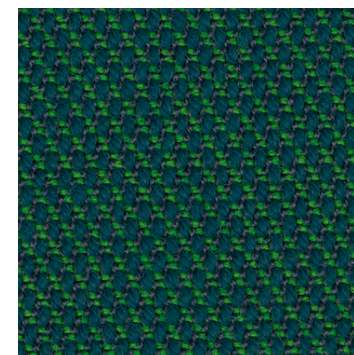
STT 453



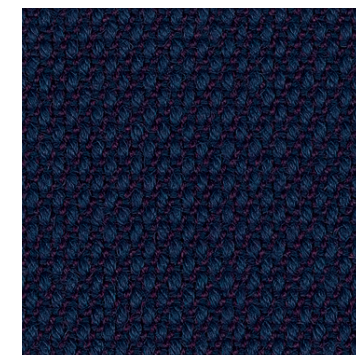
STT 666



STT 983



STT 976



STT 796

Disponibile su richiesta in 54 colori  
Scheda tecnica completa > [clicca qui](#).

Available on demand in 54 colours.  
Complete technical schedule > [click here](#).

**cizeta**