

# Hot

## Ciniglia / Chenille Cat. c

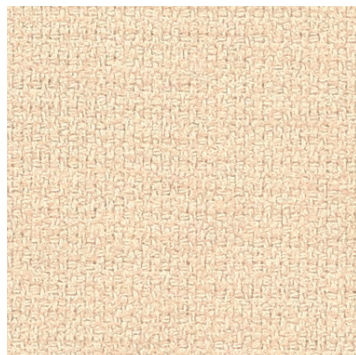
**Composizione/  
Composition**  
100% PES

**Abrasione/Abrasion  
(Martindale)**  
45.000 cicli/cycles  
*EN ISO 12947-2*

**Pilling**  
4 *EN ISO 12945-2*  
**Solidità colori alla luce  
Colour fastness to light**  
4/5 *EN ISO 105 B02*

**Solidità colori allo sfregamento  
Colour fastness to rubbing**  
secco \_ dry: 4/5  
umido \_ wet: 4/5  
*EN ISO 105 X12*

**Resistenza al fuoco/Flame Retardant**  
BS 5852 crib 5 ▪ DIN 4102, B1 ▪ EN 1021-1/2 ▪  
IMO FTP Code 2010 Part 8 ▪ NF P 92 503-507,  
M1 ▪ UNI 9175 classe 1IM ▪ US Cal. TB 117-  
2013



**HOT 202**



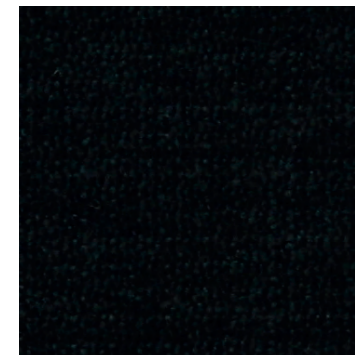
**HOT 210**



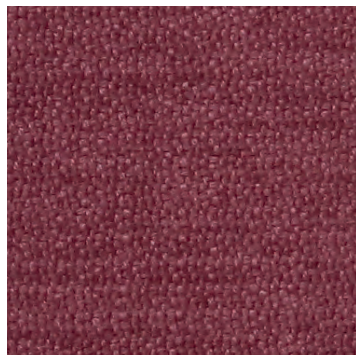
**HOT 206**



**HOT 245**



**HOT 227**



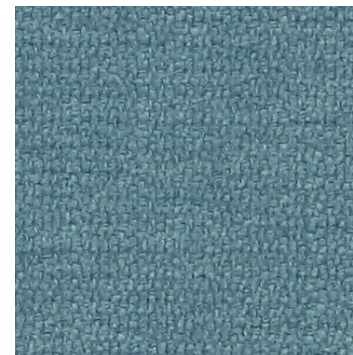
**HOT 236**



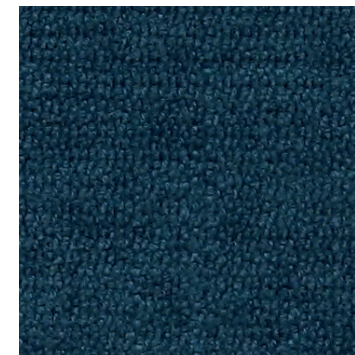
**HOT 215**



**HOT 238**



**HOT 249**



**HOT 241**

Disponibile su richiesta in 42 colori  
Scheda tecnica completa > [clicca qui.](#)

Available on demand in 42 colours.  
Complete technical schedule > [click here.](#)

**cizeta**