

# Yoredale

Bouclé / Bouclé Cat. D

## Composizione/ Composition

95% WO  
3% PES  
2% PA

## Abrasione/Abrasion (Martindale)

> 50.000 cicli/cycles

## Solidità colori alla luce Colour fastness to light

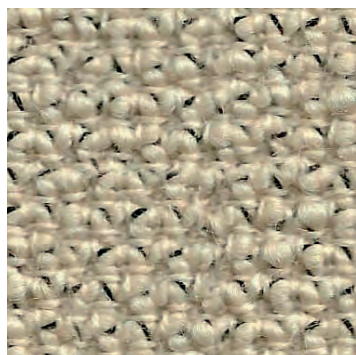
5 *EN ISO 105 B02*

## Solidità colori allo sfregamento Colour fastness to rubbing

secco \_ dry: 4  
umido \_ wet: 4  
*EN ISO 105 X12*

## Resistenza al fuoco/Flame Retardant

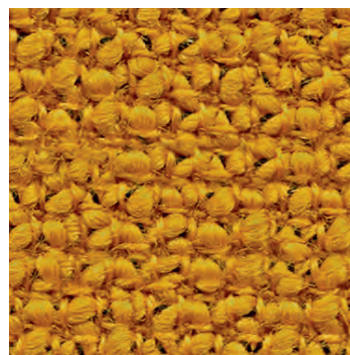
BS 7176 Low Hazard ▪ EN 1021-1/2 ▪  
ÖNORM B 3825 & A 3800-1 ▪ IMO FTP  
Code 2010 Part 8 ▪ UNI 9175 Classe 1IM



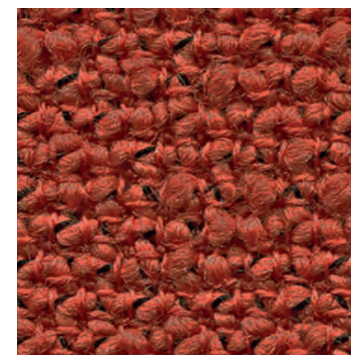
UDA 29



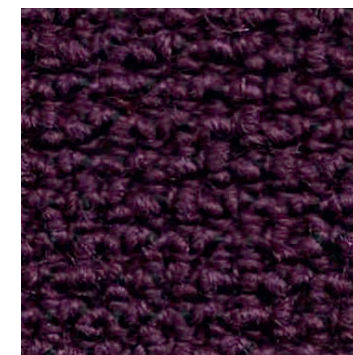
UDA 07



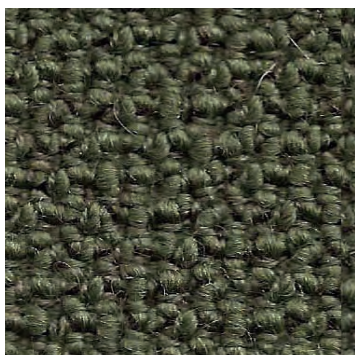
UDA 16



UDA 13



UDA 38



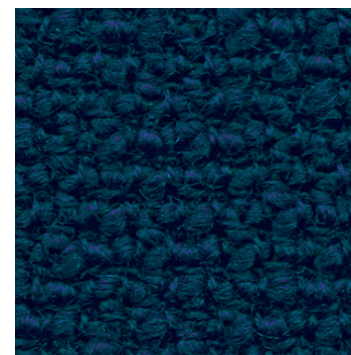
UDA 28



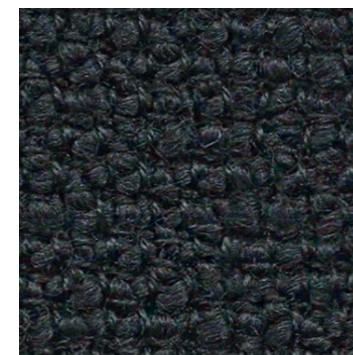
UDA 08



UDA 20



UDA 17



UDA 25

Disponibile su richiesta in 33 colori  
Scheda tecnica completa > [clicca qui](#).

Available on demand in 33 colours.  
Complete technical schedule > [click here](#).

**cizeta**