

Crazy

Ecopelle / Artificial leather Cat. B

Composizione/ Composition

80% PVC
18% PES
2% PU

Abrasione/Abrasion (Martindale)

50.000 cicli/cycles
EN ISO 5470-2

Solidità colori alla luce Colour fastness to light

6 *EN ISO 105 B02*

Solidità colori allo sfregamento Colour fastness to rubbing

secco _ dry: 4/5
umido _ wet: 4/5
EN ISO 105 X12

Resistenza al fuoco/Flame Retardant

BS 5852-1 ▪ EN 1021-1/2 ▪ UNI 9175 classe 1IM



CRZ 1002



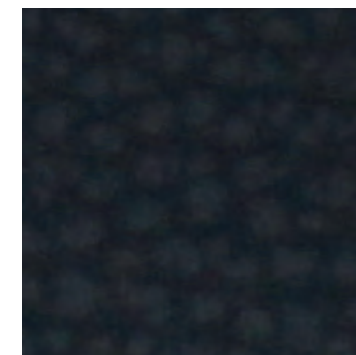
CRZ 1003



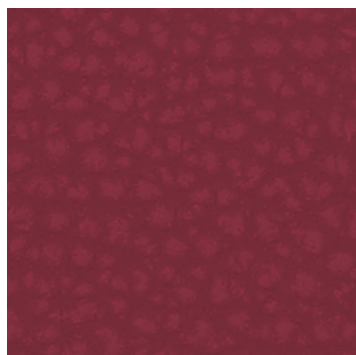
CRZ 1004



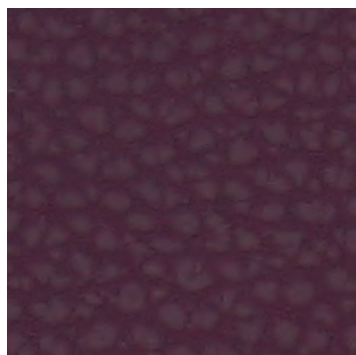
CRZ 1006



CRZ 1007



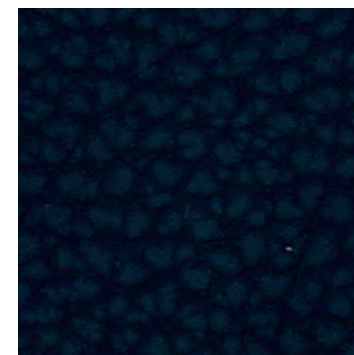
CRZ 1014



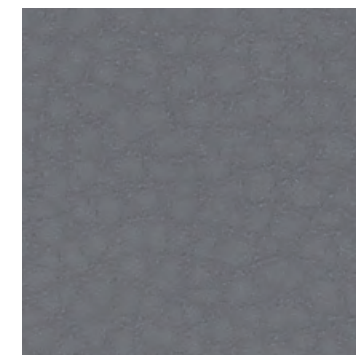
CRZ 1015



CRZ 1012



CRZ 1011



CRZ 1009

Disponibile su richiesta in 15 colori
Scheda tecnica completa > [clicca qui](#).

Available on demand in 15 colours.
Complete technical schedule > [click here](#).

cizeta