

# Patio Outdoor

Tessuto per Esterno / Outdoor Fabric Cat. E

## Composizione/ Composition

100% PES TRE

## Abrasione/Abrasion (Martindale)

50.000 cicli/cycles  
EN ISO 12947-2

## Pilling

4/5 EN ISO 12945-2

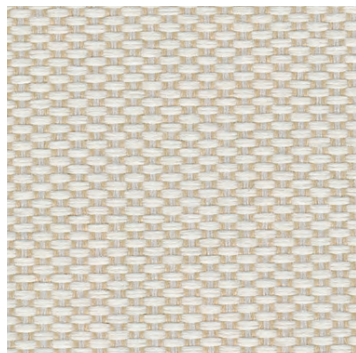
**Solidità colori alla luce**  
**Colour fastness to light**  
7 EN ISO 105 B02

## Solidità colori allo sfregamento Colour fastness to rubbing

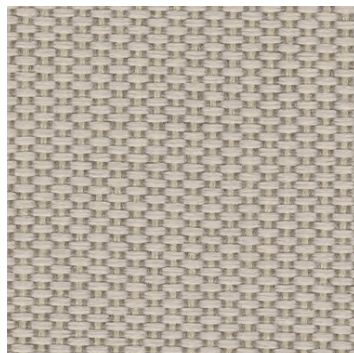
secco \_ dry: 4/5  
umido \_ wet: 4/5  
EN ISO 105 X12

## Resistenza al fuoco/Flame Retardant

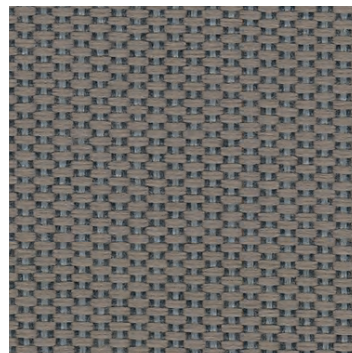
AS/NZS 1530.3 ▪ AS/NZS 3837 class 1 ▪  
BS 5852 Crib 5 ▪ DIN 4102, B1 ▪ EN 1021-1/2 ▪  
IMO FTP Code 2010 Part 8 ▪ NF D 60-013 ▪ NF  
P 92 503-507, M1 ▪ NFPA 701 ▪ ÖNORM B1/Q1  
▪ UNI 9175 Classe 1IM ▪ US Cal. TB 117-2013



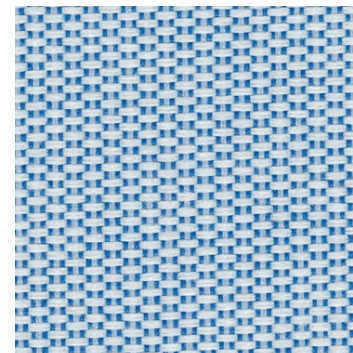
PTO 200



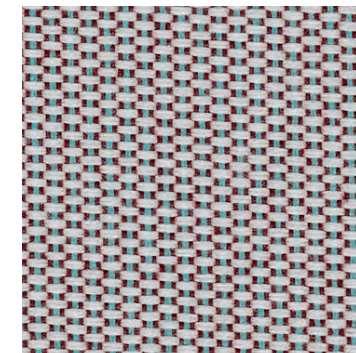
PTO 210



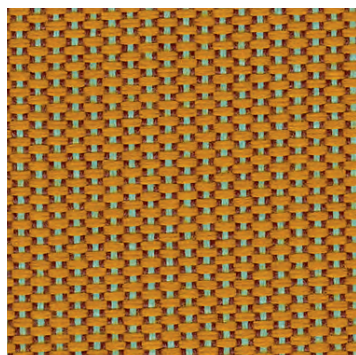
PTO 150



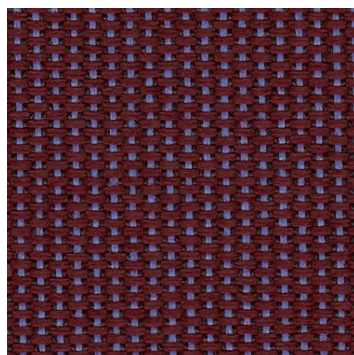
PTO 730



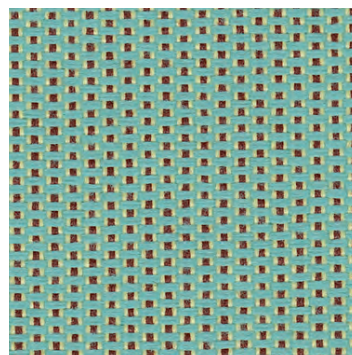
PTO 220



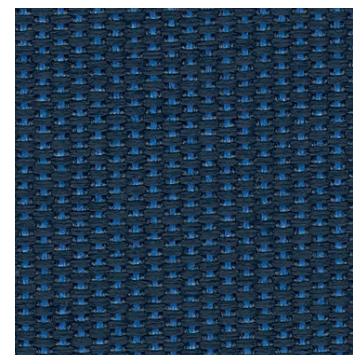
PTO 450



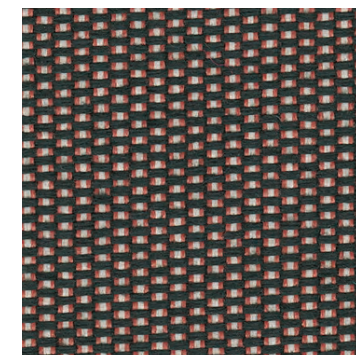
PTO 570



PTO 840



PTO 780



PTO 370

Disponibile su richiesta in 24 colori  
Scheda tecnica completa > [clicca qui](#).

Available on demand in 24 colours.  
Complete technical schedule > [click here](#).

**cizeta**