

Remix

Tessuto / Fabric Cat. D

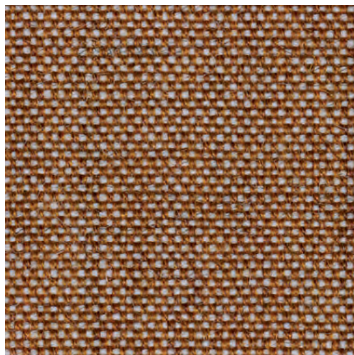
**Composizione/
Composition**
90% WW
10% PA

**Abrasione/Abrasion
(Martindale)**
100.000 cicli/cycles
EN ISO 12947-2

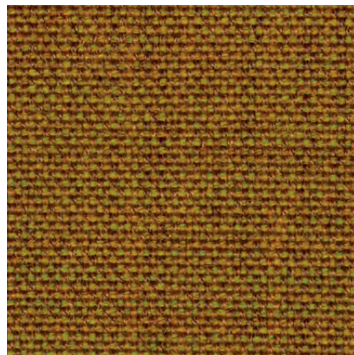
Pilling
4 *EN ISO 12945-2*
**Solidità colori alla luce
Colour fastness to light**
6 *EN ISO 105 B02*

**Solidità colori allo sfregamento
Colour fastness to rubbing**
secco _ dry: 4
umido _ wet: 4
EN ISO 105 X12

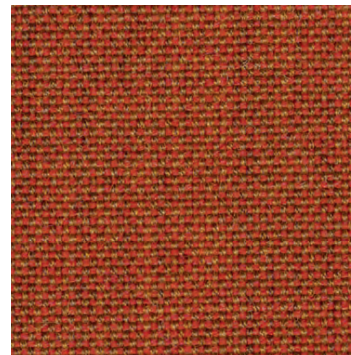
Resistenza al fuoco/Flame Retardant
AS/NZS 1530.3 ▪ AS/NZS 3837 class 2 ▪
BS 5852-1 ▪ EN 1021-1/2 ▪ IMO FTP Code
2010 Part 8 ▪ NF D 60-013 ▪ NFPA 260, class 1
▪ ÖNORM B1/Q1 ▪ UNI 9175 1IM ▪ US Cal. TB
117-2013



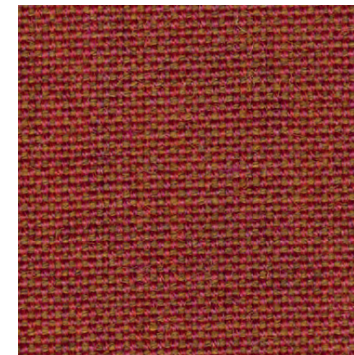
RMX 252



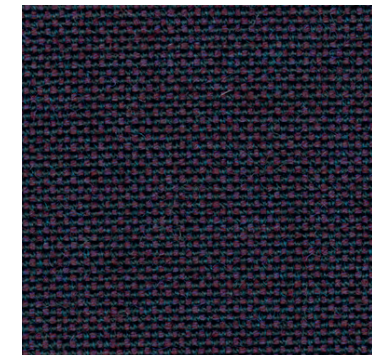
RMX 422



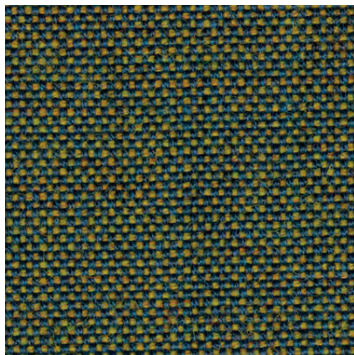
RMX 443



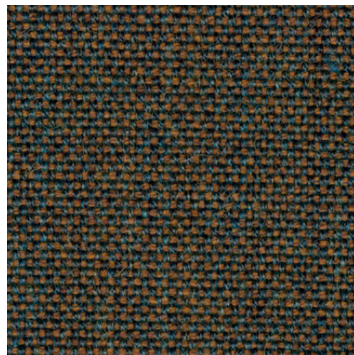
RMX 653



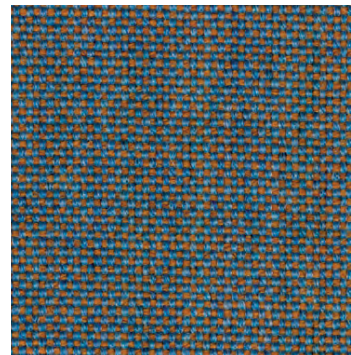
RMX 692



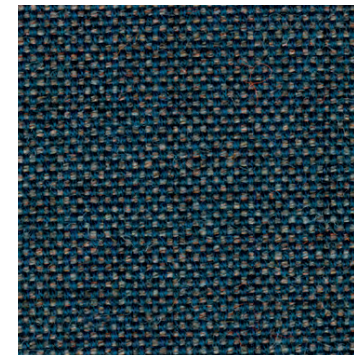
RMX 842



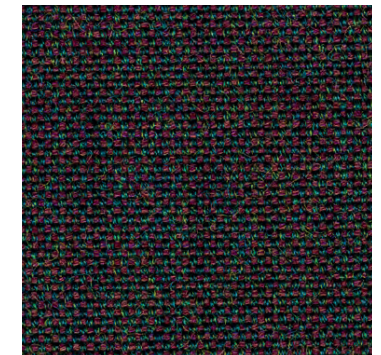
RMX 954



RMX 722



RMX 753



RMX 362

Disponibile su richiesta in 72 colori
Scheda tecnica completa > [clicca qui.](#)

Available on demand in 72 colours.
Complete technical schedule > [click here.](#)

cizeta