

Silvertex

Ecopelle / Artificial leather Cat. B

Composizione/ Composition

- VI
- UR
- PES

Abrasione/Abrasion (Martindale)

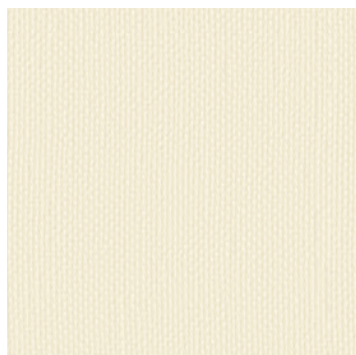
> 300.000 cicli/cycles
EN ISO 12947-2

Solidità colori alla luce Colour fastness to light

/8 *EN ISO 105 B02*

Resistenza al fuoco/Flame Retardant

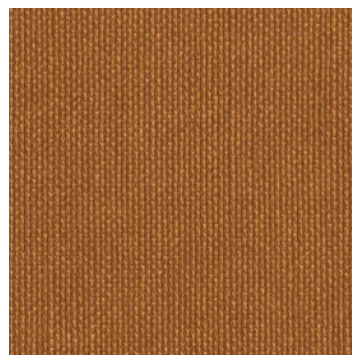
DIN 4102, B2 ▪ EN 1021-1/2 ▪ FMVSS 302 ▪ IMO FTP Code 2010 Part 8 ▪
NF P 92 503-507, M2 ▪ NFPA 260, class 1 ▪ ÖNORM B 3825 & A 3800-1 ▪ UNI
9175 Classe 1 IM ▪ US Cal. TB 117-2013



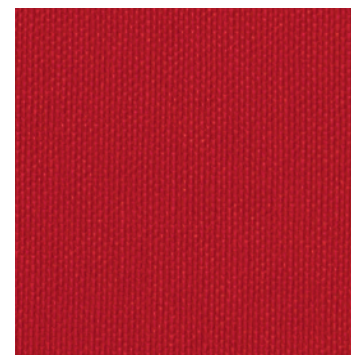
SIL 1077



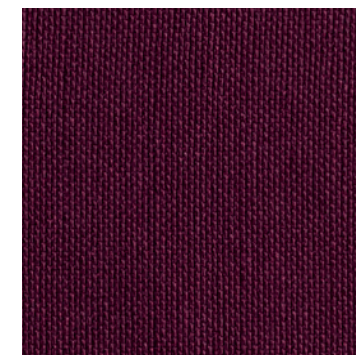
SIL 0009



SIL 2003



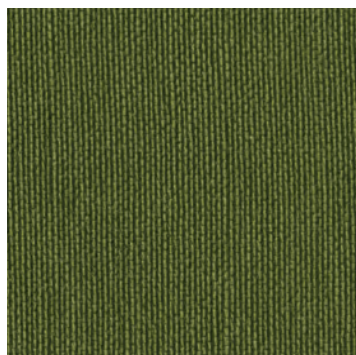
SIL 2011



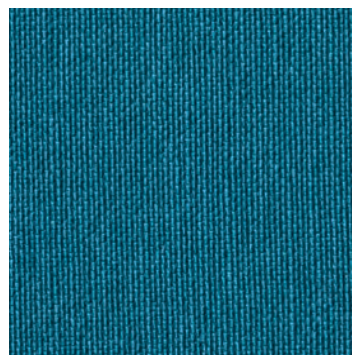
SIL 6004



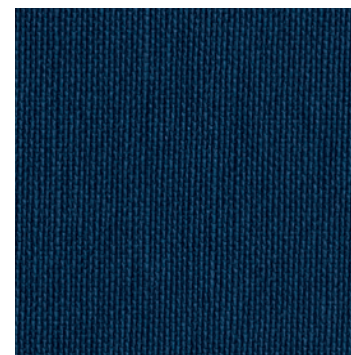
SIL 4024



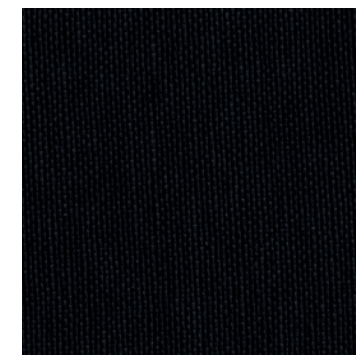
SIL 5020



SIL 3001



SIL 3007



SIL 9001

Disponibile su richiesta in 60 colori
Scheda tecnica completa > [clicca qui](#).

Available on demand in 60 colours.
Complete technical schedule > [click here](#).

cizeta